

PC Sta. 23+87.34 ("X" on Conc.)  
 I-44 Stub Survey  
 = PC Sta. 23+87.34 SWO 3748(1) Survey  
 = P.O.T. Sta. 23+87.50 SWO 2383(1) Survey  
 = PC Sta. 23+87.51 U-F-232 (32) Plans  
 = P.O.T. Sta. 44+61.46 (P.K. Nail)  
 on E Frontage Road (95.50 Lt.)

POST Sta. 26+50.83 on EW 164.5 Sec. Line (Not Set)  
 = P.O.T. Sta. 47+25.32 (Not Set) Begin Frontage Road  
 = Stub Survey (95.50' Lt.)  
 = P.O.T. Sta. 27+28+70.23 (Not Set) Union Pacific R.R.  
 = Stub Survey (224.76' Rt.)  
 = P.O.T. Sta. 33144+57.66 (Not Set) Stillwater Central R.R.  
 = Stub Survey (374.77' Rt.)  
 = P.O.T. Sta. 19.06' Lt. to 1/4 Section Corner (P.K. Nail)  
 = P.O.T. Sta. 156.73' Lt. to R/W Cor.  
 = P.O.T. Sta. 324.76' & 424.77' Rt. to R/W Cor.  
 = P.O.T. Sta. 2611.85' Rt. to Center Section

POC Sta. 26+50.98 on EW 164.5 Sec. Line (Not Set)  
 = P.O.T. Sta. 47+25.32 (Not Set) Begin Frontage Road  
 = Stub Survey (90.63' Lt.)  
 = P.O.T. Sta. 27+28+70.23 (Not Set) Union Pacific R.R.  
 = Stub Survey (229.63' Rt.)  
 = P.O.T. Sta. 33144+57.66 (Not Set) Stillwater Central  
 = Stub Survey (379.64' Rt.)  
 = P.O.T. Sta. 14.19' Lt. to 1/4 Section Corner (P.K. Nail)  
 = P.O.T. Sta. 153.86' Lt. to R/W Cor.  
 = P.O.T. Sta. 329.64' & 429.64' Rt. to R/W Cor.  
 = P.O.T. Sta. 2616.73' Rt. to Center Section

POST 155.20' Ahd. PI Sta. 28+51.00  
 = P.O.T. Sta. 29+98.97 NS 258.0 Section Line  
 = PC Sta. 28+51.00 Frontage Road Stub Survey  
 = Stub Survey (60.98 Lt.)  
 = P.O.T. Sta. 29+98.97 NS 258.0 Section Line  
 = PC Sta. 28+51.00 Frontage Road Stub Survey  
 = Stub Survey (60.98 Lt.)

POST 244.67' Ahd. PI Sta. 28+51.00  
 = P.O.T. Sta. 51+59.40 Frontage Road  
 = PC Sta. 28+51.00 Frontage Road Stub Survey  
 = Stub Survey (64.37' Lt.)

Centerline Curve Data  
 Curve 116  
 PI Sta. 54+72.42  
 C008 - Frontage Road  
 X= 473085.537  
 Y= 473085.537  
 Delta 9°34'53.89" Left  
 Dc 1°32'02.73" (Arc)  
 T 313.02'  
 L 624.58'  
 R 3734.83'  
 E 13.09'

Centerline Curve Data  
 Curve 114  
 PI Sta. 28+51.00  
 C002 - I-44 Stub Survey  
 X= 185267.9693  
 Y= 479314.6787  
 Delta 7°26'14.71" Left  
 Dc 0°48'11.38" (Arc)  
 T 463.66'  
 L 926.02'  
 R 7133.78'  
 E 15.05'

OKLAHOMA DEPARTMENT OF TRANSPORTATION					
FED. ROAD DIST. NO.	STATE	PROJ. NO.	FISCAL YEAR	SHEET NO.	TOTAL SHEETS
	OKLA.				
DESCRIPTION		REVISIONS		DATE	

45+00

25+00

50+00

30+00

Pres. R/W

Pres. R/W

55+00

35+00

60+00

39+00

Sec. 19  
T-2-N, R-11-W

Sec. 19  
T-2-N, R-11-W

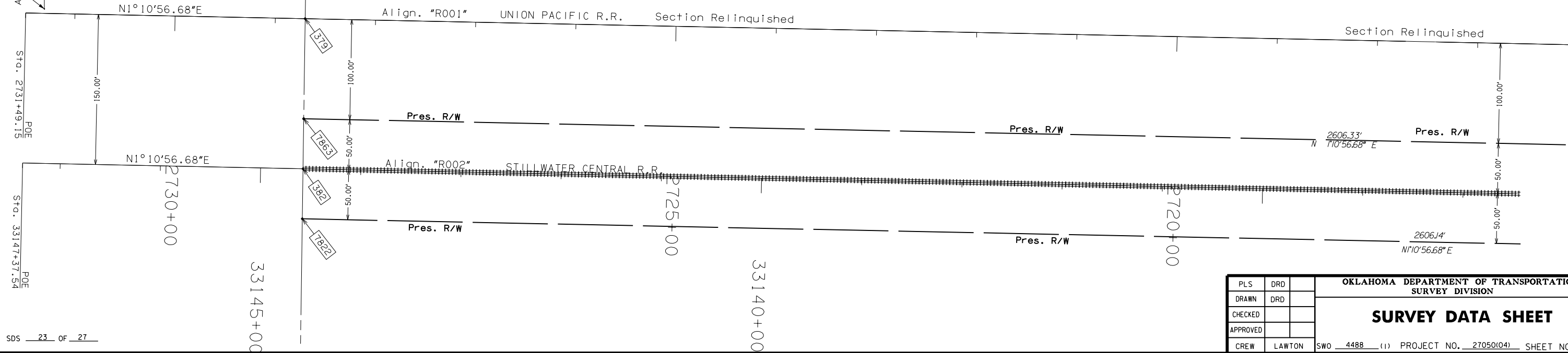
Sec. 20  
T-2-N, R-11-W

Sec. 19  
T-2-N, R-11-W

Sec. 20  
T-2-N, R-11-W



Scale: 1" = 50'



PLS	DRD	OKLAHOMA DEPARTMENT OF TRANSPORTATION SURVEY DIVISION <b>SURVEY DATA SHEET</b> CREW LAWTON SWO 4488 (1) PROJECT NO. 27050(04) SHEET NO. S-23
DRAWN	DRD	
CHECKED		
APPROVED		
CREW	LAWTON	